



CAMBRIDGE ARTS THEATRE

Visual Story

This visual story is designed for visitors to Cambridge Arts Theatre, particularly for those who are visiting a Relaxed Performance.

Relaxed performances are for audience members who will benefit from a more relaxed performance environment including those with an autism spectrum condition, sensory or communication disorders, a learning disability or families with very young children.

Where is the play?

The play is being performed, by actors, at Cambridge Arts Theatre, on Peas Hill, near the market.

General information about Cambridge Arts Theatre

There are two entrances to Cambridge Arts Theatre.

This is the entrance on
Peas Hill



This is the entrance on
St Edward's Passage



This is the **Foyer** (inside area of the theatre) where people wait to go into the auditorium. It can get quite busy.



This is the **Box Office**, where you can collect your tickets.



There are three bars. You can buy drinks and snacks here.

The Maynard Bar



The Circle Bar



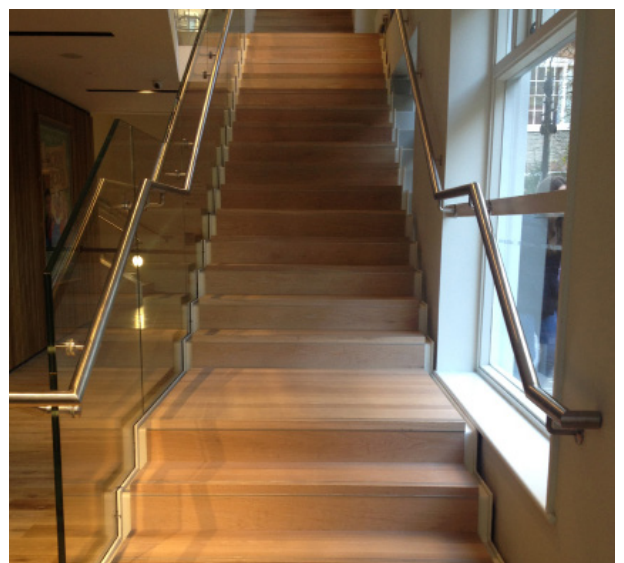
The Stalls Bar



This is what the entrances to the auditorium looks like. One says **Stalls Right Entrance**. The Circle entrances say **Circle Right Entrance** and **Circle Left Entrance**.



If you are sitting in the circle (upstairs) you will need to go upstairs.



These are the seats in the
auditorium.



If you have any questions, concerns or need assistance while visiting the Arts Theatre, our Front of House team are always available to help.

If you have any questions before your visit, please contact our Box Office team on 01223 503333 or email boxoffice@cambridgeartstheatre.com.



Cambridge Arts
Theatre