



# **CINDERELLA**

**Relaxed Performance**

**Pantomime Visual Story 2024**

**Cambridge Arts Theatre**

This visual story is designed for visitors to the Relaxed Performances of *Cinderella*. Relaxed performances are for people who will benefit from a more relaxed performance environment including people with an Autism Spectrum Condition, sensory or communication disorders, or a learning disability.



## Where is the pantomime?

The pantomime is being performed at Cambridge Arts Theatre, on Peas Hill, near the market.

## General information about Cambridge Arts Theatre

There are two entrances to Cambridge Arts Theatre.

---

This is the entrance on  
**Peas Hill**



---

This is the entrance on  
**St Edward's Passage**



---

This is the **Foyer** (inside area of the theatre) where people wait to go into the auditorium. It can get quite busy.



---

This is the **Box Office**, where you can buy or collect your tickets.



---

There are three bars. You can buy drinks and snacks here.

**The Maynard Bar**



---

## The Circle Bar



---

## The Stalls Bar



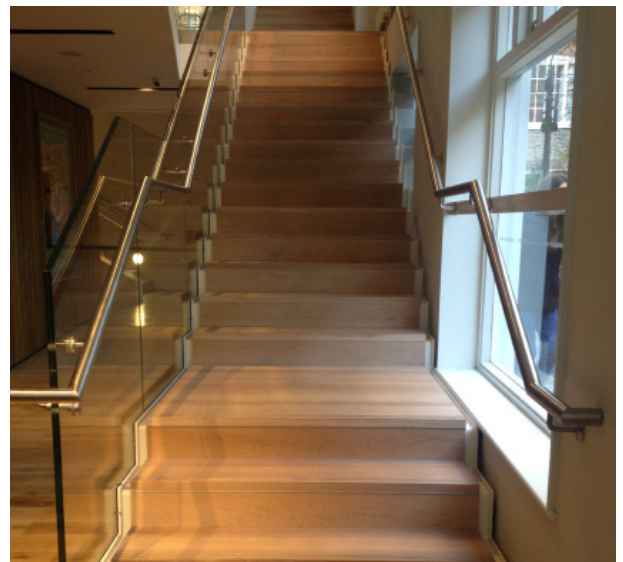
---

This is what the entrances to the auditorium looks like. One says **Stalls Right Entrance**. The Circle entrances say **Circle Right Entrance** and **Circle Left Entrance**.  
→



---

If you are sitting in the circle (upstairs) you will need to go up a set of stairs to get to your seats.  
→



---

These are the seats in the auditorium.  
→



# What to expect at Cinderella

---

There is a very sparkly fairy godmother called Fairy Goodheart.



---

Some of the characters will shout and can be quite loud.

There will be songs that you might know in the pantomime.



---

The Wicked Stepsisters are men pretending to be women.



---

Cinderella is Baron Hardup's daughter. She is a beautiful, kind person who is very clever.



---

Buttons works for Baron Hardup and is Cinderella's best friend. He is very silly and you can laugh with him.



---

The actors may ask you to join in with things like singing, dancing and shouting. This is all done from your seat and can make it very loud in the theatre. The actors will ask a few people to go onstage and join in. You can only go on stage if you are asked.



---

Sometimes it seems like people  
get hurt but it is pretend.



The pantomime is 2 hours 20 minutes long with  
a 20 minute interval (where you can go to the toilet,  
have a drink and walk around the theatre).

If you have any questions regarding the Relaxed Performances  
please speak to a member of the Front of House team on your  
arrival.

**If you have any questions before the show please contact  
our Box Office on 01223 503333 or email  
[boxoffice@cambridgeartstheatre.com](mailto:boxoffice@cambridgeartstheatre.com).**